

COMPANY PROFILE



ELTEK
ENGINEERING SERVICES

SYSTEMS | INNOVATION | TECHNOLOGY

**TURNKEY ENGINEERING SOLUTIONS
(ENGINEERING, PROCUREMENT &
CONSTRUCTION MANAGEMENT)**

CONTENTS

CORPORATE PROFILE	1
Background Information	
Vision	
Mission	
Values	
Human Resource Development	
General Services	
CORE SERVICES	2
Summary Of Services	
Overview Of Offered Services	
CONSTRUCTION CAPABILITIES	4
PLANT AND EQUIPMENT	5
SOFTWARE TOOLS	6
CLIENTS	7
MANAGEMENT TEAM	8
PROJECT PORTFOLIO	9
CONTACT	12



CORPORATE PROFILE

BACKGROUND INFORMATION

ELTEK Engineering Services is a 100% black-owned turnkey engineering firm that offers multi-disciplinary engineering design, procurement and construction management (EPCM) services across various sectors of the built environment within South Africa and the rest of the African continent. We offer engineering solutions across a range of industry applications such as building services (commercial, retail, residential, industrial), electricity generation, transmission and distribution, renewable energy, underground and surface mining, water and sewer treatment plants, industrial (E.g. FMCG, manufacturing, process plants, and storage facilities) and specialized electrical network studies to name a few.

Formed in 2013, the company has extensive experience and has a technically competent and highly motivated team that has been built over the last few years.

VISION

Eltek Engineering Services aims to become a leading multi-disciplinary engineering firm that offers turnkey engineering solutions through the timeous delivery of projects within budget and according to our clients' specifications.

MISSION

At Eltek Engineering Services we aim to satisfy our clients' needs through the provision of cost effective solutions on time, within budget and appropriate standards. It is our wish to establish long-lasting mutual relationships with our clients through excellent service, short turn-around times, readily-available technical support as well as encouraging feedback from our clients.

In support of this, we are committed:

- To be the preferred electrical engineering consultancy of choice through sustained quality service,
- To thrive with integrity and enterprise thereby creating stakeholder wealth and opportunities for employee advancement.
- To offer services after office hours and over weekends to cater for working class individuals that hold regular day jobs.
- To encourage and support the empowerment of the previously disenfranchised individuals and communities.
- To create sustainable job opportunities and build a sizable skills base.
- To engage in equal opportunity development with special emphasis to the empowerment of women in the target groups.
- To instill safety and environmental sensitivity within the company.



VALUES

Values important to the company are:

- Professionalism
- Client Satisfaction
- Integrity
- Excellence
- Innovation
- Team work
- Environmental consciousness
- Social Empowerment

HUMAN RESOURCE DEVELOPMENT

Eltek Engineering Services is committed to equality for all employees in accordance with the law of the land; and supports employee advancement and development of technical, managerial and other skills of its employees.

The implementation of Eltek Engineering Services' equal opportunity programme is based on:

- Using skilled individuals with minimum experience in order to accelerate their integration into the job market.
- Training and skills development of existing and newly employed staff.
- Selecting candidates from the target groups without compromising excellence in service delivery.

GENERAL SERVICES

Our experienced team of registered professional engineers and technicians is able to provide the following services:

- Conceptual, Pre-feasibility and feasibility studies
- Preliminary and detail design of electrical and mechanical engineering infrastructure installation projects including Bills of Quantities and technical specifications.
- Preparation of tender documents and tender adjudication.
- CAD Draughting and review of Drawings for Tender, Construction and As-built records purposes.
- Conditional assessment, audits and quality inspections of electrical and mechanical infrastructure.
- Owners' Engineer services
- Design Reviews
- Liaising with relevant stakeholders (Utilities, Clients, Principal agents, authorities etc)
- Project management and site supervision including certification of invoices, procurement, site instructions and periodic progress reports to owner/client.
- Electrical and mechanical engineering construction and installation works.

CORE SERVICES

SUMMARY OF SERVICES

The company offers the following core services:

- Electrification and medium voltage reticulation design
- Electrical building services design.
- Electricity transmission and distribution network master-planning.
- MV and HV Substation Design.
- Transmission and Distribution Overhead Line Design
- Project Management

OVERVIEW OF OFFERED SERVICES

Electrification and Medium Voltage Reticulation Design

Our electricity reticulation services extend from rural electrification to the design of urban electricity networks. We also offer outdoor streetlighting and high mast lighting design services.

Common tasks undertaken in the design of electrification and MV reticulation networks include the following;

- Load flow simulations.
- Voltage drop studies.
- Load balancing studies.
- Cable/conductor sizing
- Miniature substation/pole transformer sizing.

We are conversant with various standards having worked for various utilities across the African continent

Mechanical Building Services Design

A summary of typical services in the building mechanical engineering sector includes:

- Heating, Ventilation and Airconditioning (HVAC).
- Wet Services and Plumbing.
- Rationale Fire Design (Fire detection and protection).
- Vertical Transport (Passenger Lifts, Goods Lifts and Escalators)
- Project Management

Electrical Network Master-planning

Master-planning studies are usually undertaken by power utilities to assess the power requirements of a specific supply zone in order to identify future capital expansion green field and refurbishment projects that may be required to ensure that the electricity networks have adequate capacity to handle the forecasted future loads. Part of these capital projects may be the construction of new transmission/distribution power lines and substations as well as the refurbishment and upgrading of existing transmission/distribution power lines and substations. The outputs of an electricity master-plan may therefore include a high level technical specification for a power line which includes details such as preferred line routes, substation locations, conductor sizes, transformer sizes etc.



Substation and Power Line Design

Our team has extensive experience in the design of medium and high voltage reticulation, distribution and transmission substations for municipalities, utilities and private clients such as mines and holiday resorts. Our previous assignments range from 11kV reticulation substations to 132kV utility substations. We are also equally competent with different sets of specifications and standards such as IEC, SANS as well as ESKOM.

Some of the services include;

- Substation Site and Line Route Selection
- Substation Layout
- Optimized Conductor Selection
- Tower Geometry and Tower Families Optimization
- Earthing and Lightning Stroke Protection
- Telecommunication and Optical Fibre Cables design
- Foundation Design
- Optimized Tower Spotting
- Detailed Support Structure, Tower and Foundation Design
- Project Cost Estimates

Renewable Energy Studies

ELTEK has experience in the renewable energy sector, particularly in rooftop and large scale solar PV plants as well as wind energy facilities. We have acted in the capacity of design engineers as well as owner's engineers for various clients.

Our offer includes electrical balance of plant (eBoP) design, optimization and loss studies, grid connection studies and grid-connection infrastructure design.

Energy Efficiency and Demand Side Management

We also offer energy audits to assess client's capacity to save power. Energy efficient initiatives may include installation of efficient lights, use natural lighting, use of solar PV panels and heat pumps as well as incorporation of smart devices to control the efficient use of electricity.

Project Management

At **Eltek Engineering Solutions** we pride ourselves on managing projects and protecting our client's monetary and infrastructure assets through effectively managing project teams. We aim to deliver projects timeously and within the stipulated budget, whilst maintaining a high level of quality.

Some of the project management services provided include the following;

- Quality management system planning and implementation
- Site Supervision and construction monitoring
- Turnkey project design and project management
- SHE management
- Construction regulations implementation

CONSTRUCTION CAPABILITIES

ELTEK has a streamlined team of qualified and experienced electricians, heating, ventilation and air-conditioning (HVAC) and mechanical technicians, construction supervisors, project managers as well as health and safety professionals.

Our key focus markets are the following:

- Electricity
- Petrochemical
- Mining
- Manufacturing
- State Owned Entities

We offer the following services in the mechanical and electrical construction fields;

Electrical Construction

- MV and HV Substations (Up to 132kV)
- High Voltage Overhead Power Line (Up to 132kV)
- Solar PV Power Plants (Rooftop and Gridscale)
- Household Electrification
- Building Electrical
- Street Lighting
- High Mast Lighting
- Underground Cable Networks
- Indoor Substations
- Motor Control Centres (MCCs)
- Mining Electrical Reticulation
- Instrument Wiring
- Cabling Installation
- Instrumentation and Control Cabling and Panels



Buildings Facilities Management

- Alterations
- General Building Maintenance
- Building Electrical Installations
- HVAC Maintenance
- Wet Services and Plumbing
- Emergency Generators

Mechanical & Piping Construction

- Piping Installation
- Equipment Installation
- Heating Ventilation and Air-conditioning (HVAC)

Plant Maintenance

- Inspections and Conditional Assessments
- Cable Fault Location and Maintenance
- Equipment Cleaning and lubrication
- Mechanical Maintenance
- Electrical Maintenance
- Condition Monitoring
- Minor Maintenance
- Shutdown Maintenance
- Flushing, Air Blowing, Hand Cleaning and Sand Blasting

PLANT AND EQUIPMENT

ELTEK owns its own plant and equipment to execute 100% of the majority of the projects that they undertake. In the cases where additional plant and equipment is required, we are able to hire plant and equipment from reputable service providers.

ELTEK owns the following plant and equipment;



QTY	ITEM	DESCRIPTION
3	NISSAN NP200	LIGHT PICKUP VAN
4	FORD RANGER	4X4 DOUBLE CAB BAKKIE
1	HYUNDAI H1	2 TON PICK-UP TRUCK
1	GWM STEED 5 2.2 MPI SAFETY PICK UP DOUBLE CAB	PICKUP VAN WITH CANOPY
1	TATA XENON 2.2L DLE DOUBLE-CAB	4X4 DOUBLE CAB BAKKIE
1	NISSAN CABSTAR CRANE TRUCK	8-TON CRANE TRUCK
2	WELDING MACHINE	160 A WELDING MACHINE
2	STAMFORD GENERATOR	5,5KVA 200KW 360, 8AMP GENERATOR
10	INDIVIDUAL TOOLKITS	EACH ELECTRICIAN FULLY EQUIPPED WITH OWN PERSONAL TOOLKIT (SPANNERS, PLIERS, ETC.) AND ALAN KEYS
3	BABY GRINDER	850W ANGLE GRINDER
5	COMPACT DRILL	1200W ROTARY HAMMER
3	CONCRETE DRILL	850W COMPACT DRILL
5	HYDRAULIC CRIMPING TOOL	HEAVY DUTY CRIMPING TOOL (16-240MM2)
5	MECHANICAL CRIMPING TOOL	HEAVY DUTY CRIMPING TOOL (25-150MM2)
5	PORTABLE CRIMPING TOOL	LIGHT DUTY CRIMPING TOOL (16-25MM2)
3	RS PRO IPM3600N POWER QUALITY ANALYSER	RS PRO IPM3600N POWER QUALITY ANALYSER, 3-PHASE, 999.9A MAX, 999.9V MAX
1	MAVIC ENTERPRISE DUAL WITH SMART CONTROLLER	ENTERPRISE DRONE WITH INFRARED SCANNING CAPABILITY
VARIOUS	TESTING EQUIPMENT ITEMS	MAJOR TECH 4105 (1); DIGITAL INDUSTRIAL TESTER – MAJOR TECH MT550 (1); MEGGER TESTER – ANALOGUE INSULATION (2); PHASE ROTATION TESTER – MAJOR TECH MT930 (2); LINE TESTER (5); 16A PLUG POLARITY TESTER – TOP TRONIC (1)
VARIOUS	MISCELLANEOUS ITEMS	BARRICADING ITEMS – TAPE, CONES ETC.; LADDERS, WHEELBARROWS, TAPE MEASURES, SPIRIT LEVELS, SAWS, SHOVELS, PICK-AXES, EXTENSION CORDS, METRIC MEASURING WHEELS, CABLE CUTTERS ETC.
1	ZECK TENSIONER MACHINE	ZECK TENSIONER MODEL 2006(CE062743) TYPE 1300/8-8TON
1	ZECK PULLER MACHINE	ZECK PULLER MODEL 2006(CE062737) TYPE SPW8-8TON



SOFTWARE TOOLS



ELTEK has access to the following licensed software tools.



SOFTWARE PACKAGE	DESCRIPTION	FUNCTION
RETICMASTER 12	POWER SYSTEM ANALYSIS	<ul style="list-style-type: none"> LOAD FLOW ANALYSIS VOLTAGE DROP STUDIES CABLE LOADING/OPTIMIZATION
DIGSILENT POWERFACTORY	POWER SYSTEM ANALYSIS	<ul style="list-style-type: none"> NETWORK MODELLING LOAD FLOW ANALYSIS TRANSIENT AND FAULT ANALYSIS VOLTAGE UNBALANCE ANALYSIS STABILITY/CONTINGENCY ANALYSIS FERRANTI EFFECT STUDY PROTECTION COORDINATION
ETAP 22.05.	POWER SYSTEM ANALYSIS	<ul style="list-style-type: none"> NETWORK MODELLING LOAD FLOW ANALYSIS TRANSIENT AND FAULT ANALYSIS VOLTAGE UNBALANCE ANALYSIS PROTECTION COORDINATION
PLS-CADD-18.01	POWER LINE DESIGN	<ul style="list-style-type: none"> ELECTRICAL OM TOWER SPOTTING SAG AND TENSION CHARTS PROFILING BILL OF QUANTITIES
CDEGS	CURRENT DISTRIBUTION, ELECTROMAGNETIC FIELDS, GROUNDING AND SOIL STRUCTURE ANALYSIS SOFTWARE	<ul style="list-style-type: none"> ELECTROMAGNETIC ENVIRONMENTAL IMPACT ASSESSMENT. LINE AND CABLE PARAMETERS COMPUTATIONS. LIGHTNING SHIELDING EARTHMAT DESIGN
MICROSTATION V8	DRAUGHTING PACKAGE	<ul style="list-style-type: none"> COMPILATION OF ELECTRONIC DRAWINGS
AUTOCAD	DRAUGHTING PACKAGE	<ul style="list-style-type: none"> COMPILATION OF ELECTRONIC DRAWINGS
MICROSOFT PROJECT	PROJECT MANAGEMENT	<ul style="list-style-type: none"> RESOURCE SCHEDULING
POWAMASTER	POWER SYSTEM ANALYSIS	<ul style="list-style-type: none"> NETWORK MODELLING LOAD FLOW ANALYSIS
DIALUX AND RELUX	LIGHTING DESIGN	INTERIOR AND EXTERIOR LIGHTING DESIGN

CLIENTS

Below are some of our clients we work with.



MANAGEMENT TEAM



The **ELTEK Engineering Services** management team is made up of Ndumiso Mabuza and David Dolan, who are registered professionally as electrical engineer and technologist respectively with the Engineering Council of South Africa. Mr. Mabuza and Mr. Dolan collectively have 50 years of experience in the electrical engineering consultancy industry.

Qualifications:

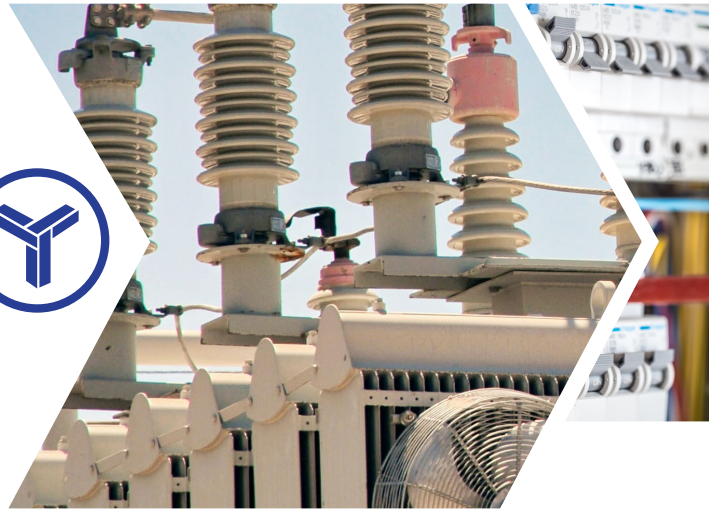
B.Eng (Electrical Engineering) – University of Pretoria
B.Eng (Honours) (Electrical Engineering) – University of Pretoria
MSc. (Electrical Engineering) - University of the Witwatersrand

Professional Affiliations:

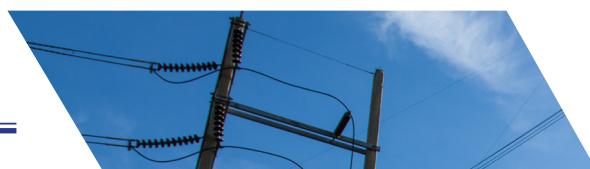
Engineering Council of South Africa (ECSA) – 20120073
South African Institute of Electrical Engineers (SAIEE) - 12825
PV Greencard

Areas of Specialization:

Electrical Building Services, Transmission and Distribution
Masterplanning, MV & HV Substation Design, Overhead Line Design,
Rural and Urban Electrification, Project Management.



PROJECT PORTFOLIO - DESIGN



ACTIVE PROJECT LIST AS AT APRIL 2025

CLIENT AND CONTACT DETAILS	TITLE OF CONTRACT FOR THE SERVICE	PROJECT VALUE (INCL. VAT)	CURRENT PROJECT STAGE	ESTIMATED COMPLETION DATE
Northwest Development Corporation (NWDC) Neo Mogashane Tel: 014 594 2570 Email: neom@nwdc.co.za	Professional Services for Solar - alternative Energy Solution for Northwest Province	R 2,550,000.00	Complete	Oct-24
Thungela Resources (Pty) Ltd Sipho Ndlovu Tel: 013 691 5493 Cell: 076 412 7845 Email: sipho.ndlovu@thungela.com	Electrical Life of Mine (LoM) Studies for 6 x Thungela-owned collieries including Zibulo, Goedehoop, Isibonelo, Greenside, Mafube, Khwezela Collieries.	R3 million	Project Kickoff	Mar-22
Thungela Resources (Pty) Ltd Sipho Ndlovu Tel: 013 691 5493 Cell: 076 412 7845 Email: sipho.ndlovu@thungela.com	Zibulo Consumer 11kV Substation Upgrade - Replacement of 14 x 11kV switchgear panels at the Zibulo Colliery Main Substation at Goedehoop Colliery in Witbank, Mpumalanga. ELTEK scope of work included preliminary and detailed design, tender compilation, project management, construction supervision and project close-out.	R14,000,000.00 (Construction) R789,647.50 (Professional fees)	Stage 5 - Construction	May-25
Ithala Development Bank Thulasizwe Phakathi Tel: 031 366 2500 Cell: 066 207 6555 Email: TPhakathi@ithala.co.za	Refurbishment of Sundumbili Shopping Centre due to Fire Damage - Ithala Development Finance Corporation Limited appointed ELTEK Engineering Services (Pty) Ltd as the multi-disciplinary subconsultant for the project management, architectural, civil, structural, electrical, mechanical, fire engineering ascope of work of the refurbishment works at Sundumbili Shopping Centre in Mandeni, Kwazulu-Natal which was damaged by fire during the riots in the Mandeni, Kwazulu-Natal province in 2021.	R56 million	Stage 5 - Construction	Aug-25
Thungela Resources Vusumuzi Dlamini Tel: 013 691 5002 Cell: 082 787 4019 Email: muzi.dlamini@thungela.com	Zibulo 4MW Solar PV Plant - Detail planning, designing and construction supervision of a 4.8MWp Solar photovoltaic (PV) at Zibulo Colliery on the outskirts of Ogies, Mpumalanga.	R86 Million	Stage 6 - Project Close-out	Feb-25
Development Bank of South Africa (DBSA) / Independent Power Producer (IPP) Office Rosinah Malesa Tel: 011 313 3927 Email: rosinahscm@dbsa.org	Technical Advisory for REIPP BW 7 Evaluation and Financial Close Phases for a Period of 24 Months - ELTEK was appointed as the Technical Transactional Advisor leading responsible for the bid evaluation of the National Renewable Energy Independent Power Producer (REIPP) Bid Window 7.	R3.7 Million	Technical Evaluation	Apr-25
Eskom Holdings SOC Limited Boifang Mومakwa Tel: 043 703 2518 Cell: 082 5679 766 Email: mومakbk@eskom.co.za	Electrification of Buffalo City Ext 24/25 (830 stands) - Electrification of 830 rural settlements in Buffalo City, Eastern Cape Province. Scope of work includes bulk medium voltage (MV) overhead lines, MV / LV pole mounted transformers, low voltage reticulation and house connections.	R 12,450,000.00	Stage 3 - Detail Design	Nov-25
Eskom Holdings SOC Limited Boifang Mومakwa Tel: 043 703 2518 Cell: 082 5679 766 Email: mومakbk@eskom.co.za	Electrification of Nyandeni Ward Ext Ph2 24/25 (299 stands) - Electrification of 299 rural settlements in Nyandeni Village, Eastern Cape Province. Scope of work includes bulk medium voltage (MV) overhead lines, MV / LV pole mounted transformers, low voltage reticulation and house connections.	R 4,485,000.00	Stage 4 - Documentation and Procurement	Nov-25
Coca Cola Beverages South Africa (Pty) Ltd Nick van der Berg Cell: 082 827 3815	Coca Cola Polokwane Manufacturing Plant Extension Electrical building services design for warehouse extension, auxiliary buildings, new hazardous materials store, syrup room and conditioning stores at existing Coca Cola Beverages South Africa (CCBSA) plant in Pretoria West, Gauteng Province.	R 250,000,000.00	Complete	Oct-23
Coca Cola Beverages South Africa (Pty) Ltd Nick van der Berg Cell: 082 827 3815	Coca Cola Midrand Manufacturing Plant Extension Electrical building services design for new truck parking facility, warehouse extension, auxiliary buildings and offices at existing Coca Cola Beverages South Africa (CCBSA) plant in Midrand, Gauteng Province.	R 146,000,000.00	Complete	Apr-23
Sol Plaatje Local Municipality Andrew Khoza Tel: 053 830 6646 Cell: 062 866 1739 Email: akhoza@solplaatje.org.za	Hadison Park Substation Upgrade Refurbishment of the Hadison Park Substation in Kimberley, Northern Cape. Replacement of 66/11kV, 2 x 10MVA transformers with 66/11kV, 2 x 30MVA as well as HV circuit breakers, current transformers, voltage transformers, isolators, indoor switchgear and protection panels due to old age of equipment and substation's capacity shortfall.	R 63,650,000.00	Stage 3 - Detail Design	On hold
Johannesburg Development Agency (JDA) Amogelang Kgoathe Tel: 011 688 7846 Cell: 063 646 6184 Email: akgoathe@jda.org.za	Kaalfontein and Matholesville Multipurpose community centres (MPCs) - Construction of 2 x greenfield community centres consisting of library, community hall, sports fields, swimming pool, indoor gym, shared offices, guard house, caretaker flat etc. Scope of work included electrical engineering, information and communication technology (ICT), mechanical engineering, fire detection and protection.	R 176,000,000.00	Stage 5 - Construction	Dec-25
Johannesburg Development Agency (JDA) Amogelang Kgoathe Tel: 011 688 7846 Cell: 063 646 6184 Email: akgoathe@jda.org.za	Johannesburg Community Library Refurbishment - Refurbishment of Heritage building in the Johannesburg central business district (CBD). Electrical, mechanical scope of work includes small power and lighting, information and communication technology (ICT), bulk power, wet services, drainage, HVAC, fire protection, vertical transport (lifts and escalators) etc.	R 56,000,000.00	Stage 5 - Construction	Jun-26
Johannesburg Development Agency (JDA) Amogelang Kgoathe Tel: 011 688 7846 Cell: 063 646 6184 Email: akgoathe@jda.org.za	Johannesburg Art Gallery Upgrade - Refurbishment of Heritage building in the Johannesburg central business district (CBD). Electrical and mechanical scope of work includes small power and lighting, bulk power, information and communication technology (ICT), wet services, drainage, HVAC, fire protection, vertical transport (lifts and escalators) etc.	R 146,000,000.00	Stage 3 - Detail Design	Unknown
Nyeleti Consulting Engineers (Pty) Ltd Rajan Padavattan Tel: +27 12 361 3629 Cell: +27 79 510 0439 Email: rajanp@nyeleti.co.za	SANRAL Independent Engineer SANRAL Professional engineering services for the role of independent engineer on the N4 Platinum Corridor Toll Road Concession.	R 3,200,000.00	Initial Contract (Term contract for 6 years: 2018 - 2024) Renewed Contract (Term contract for 6 years: 2025 - 2030)	Dec-30

PROJECT PORTFOLIO CONT.

Ekurhuleni Metropolitan Municipality Colbert Rikhotso Tel: 011 999 5249 Cell: 072 772 4138 Email: Colbert.Rikhotso@ekurhuleni.gov.za	Vulcania South 2 x 60MVA, 88 / 33 / 11kV Substation Upgrade - Design of 2 x 60MVA 88/33/11kV substation upgrade including civil works, electrical works, 9 x 11kV switchgear, 2 x switchgear / control rooms and a 88kV loop in - loop out (LILO) overhead power line with a fibre ADSS connection.	R 221,000,000.00	Complete	Dec-24
Ekurhuleni Metropolitan Municipality Ronald Ndou Tel: 011 999 5249 Cell: 072 772 4138 Email: ronald.ndou@ekurhuleni.gov.za	Electrification of Ramaphosa Informal Settlement (625 stands) - Electrification of informal structures. Scope of work includes bulk medium voltage (MV) underground cables, MV / LV miniature substations, low voltage reticulation and house connections.	R 41,265,625.00	Complete	Nov-24
Grinaker-LTA Nicolas Verrier Tel: 011 923 5600 Cell: 071 548 5927 Email: nicolas.verrier@grinaker-lta.com	Tshwane University of Technology (TUT) Multi-purpose Halls and Venues - Grinaker-LTA were appointed by Tshwane University of Technology (TUT) as the turnkey design and build contractor for the proposed new Multi-purpose Lecture Halls and Venues at the TUT Main Campus in Pretoria West, Gauteng. Grinaker-LTA in turn appointed ELTEK Engineering Services (Pty) Ltd as the subconsultant for the electrical, mechanical, fire engineering and information, and communications technology (ICT) scope of work.	R238 million	Stage 4 - Documentation and Procurement	Jun-26
Thungela Resources Siphon Ndlovu Tel: 013 691 5000 Cell: 076 412 7845 Email: siphon.ndlovu@thungela.com	Kromdraai and Bokgoni 22kV Overhead Lines - Detail planning, designing and construction supervision of a 2km 22kV overhead line at Kromdraai Colliery and a 5km overhead line at Bokgoni Colliery in Mpumalanga for Thungela Resources.	R6 Million	Complete	Feb-25
SMEC / TANESCO Lungile Kubheka Tel: 011 369 0604 Cell: 076 689 8528	Rufiji Hydropower Station 400kV Transmission Line - Detail planning and designing for a 9 x 400kV transmission line circuits to export 2,115 MW of power from the Julius Nyerere Hydropower Station to the Tanzania national electricity grid.	Undisclosed	Stage 5 - Construction	Dec-25
ARUP / Microsoft Prenevan Moodley Tel: 011 341 7299 Cell: 079 873 7254 Email: prenevan@pmtsolutions.africa	Microsoft JNB03 Data Centre - Design and construction supervision of a new 2 x 60MVA 132/22kV substation and internal electrical reticulation network in Centurion, Gauteng Province for the proposed Microsoft JNB03 datacentre.	R 203,000,000.00	Stage 3 - Detail Design	Mar-26
DBI Consulting Thandi Mponshane Tel: 012 665 0289 Cell: 072 456 5144 Email: thandi@dbiconsulting.co.za	GPG FACILITIES (HOSPITALS) - Appointment of a Professional Service Provider to Conduct Feasibility and Assessment for Microgrid Solution at GPG Facilities (Hospitals) - Provision of Professional Electrical Feasibility Studies and Assessment Services for 11 Public Clinics and Community Health Centres (CHCs).	R 1,233,120.89	Complete	Nov-24
Walter Sisulu University (WSU) Kevin Lloyd Tel: N/A Cell: +2773 870 7894 Email: kevin@mkdkg.co.za	Various Building Services projects - ELTEK was appointed as part of a consortium to execute electrical, mechanical and fire engineering building services on various projects at the Walter Sisulu University Potsdam campus in East London, Eastern Cape province. The scope of work included medium and low voltage electrical design, information and communication technology (ICT), wet services, heating, ventilation and airconditioning (HVAC), fire detection and protection. The projects that ELTEK was involved in on this appointment include the following; - Potsdam Technopark Building - Potsdam Engineering Workshops - Educational Workshops - Ibika Hospitality Building	R191 million	Stage 5 - Construction	Aug-26
ARUP / Microsoft Prenevan Moodley Tel: 011 341 7299 Cell: 079 873 7254 Email: prenevan@pmtsolutions.africa	Microsoft JNB05 Data Centre - Design and construction supervision of a new 3 x 80MVA 88/33kV substation and internal electrical reticulation network in Modderfontein, Gauteng Province for the proposed Microsoft JNB05 datacentre.	R 203,000,000.00	Stage 2 - Concept and Viability	Mar-27
Thungela Resources Siphon Ndlovu Tel: 013 691 5000 Cell: 076 412 7845 Email: siphon.ndlovu@thungela.com	Central B - Equarand 132kV Overhead Line - Detail planning, designing and construction supervision of a 2.5km 22kV overhead line to supply the new Equarand 132/11kV Substation in Newcastle, KZN Province for Newcastle Local Municipality.	R23 Million	Stage 3 - Detail Design	Dec-25
Richards Bay Industrial Development Zone (RBDIZ) Henry Kwidini Tel: 031 205 0499 Cell: 076 124 9656 Email: Henry@sizastudio.co.za	BOTE Industries Warehouse - ELTEK was appointed as part of a consortium to execute electrical, mechanical and fire engineering building services for the BOTE Industries Warehouse at the Richards Bay Industrial Development Zone (RBDIZ). The scope of work included medium and low voltage electrical design, information and communication technology (ICT), wet services, heating, ventilation and airconditioning (HVAC), fire detection and protection.	R 121,000,000.00	Stage 4 - Documentation and Procurement	Feb-26
Ekurhuleni Metropolitan Municipality Ronald Ndou Tel: 011 999 5249 Cell: 072 772 4138	Electrification of Ramaphosa Informal Settlement (625 stands) - Electrification of informal structures. Scope of work includes bulk medium voltage (MV) underground cables, MV / LV miniature substations, low voltage reticulation and house connections.	R 41 265 625,00	Stage 3 - Detail Design	Apr-24
Sol Plaatje Local Municipality Nduduzo Zwane Tel: 053 830 6646 Cell: 073 561 1702 / 084 815 7713	Refurbishment of the Carters Glen Substation in Kimberley, Northern Cape The project scope includes the addition of a 66/11kV, 20MVA transformer at the substation, relocation of 2 x 11kV overhead feeder lines extending from the substation and completion of a protection coordination study for the municipality's 66kV electricity network. ELTEK is responsible for both the design and construction of the project.	R 27 000 000,00	Stage 5 - Construction	Nov-23

PROJECT PORTFOLIO - CONSTRUCTION

CLIENT AND CONTACT DETAILS	TITLE OF CONTRACT FOR THE SERVICE	PROJECT VALUE (INCL. VAT)	CURRENT PROJECT STAGE	ESTIMATED COMPLETION DATE
University of Zululand Nombuso Ramaite Tel: N/A Cell: 072 609 1446 Email: nombuso@linothe.co.za	Unizulu 1MW Solar PV Plant - Detail planning, designing, procurement, construction supervision of a 1.2MWp Solar photovoltaic (PV) plant with battery storage at University of Zululand Kwadlangezwa Campus as an appointed subcontractor to Vukani Electrical Contractors.	R29 Million	Stage 1 - Project Inception	Dec-25
COEGA Development Corporation Lwandile Pasiwe Tel: 012 451 8300 Cell: 083 456 5910 Email: lwandile.pasiwe@coega.co.za	TASEZ Phase 2 Internal Electrical and ICT Infrastructure - The ELTEK-SOLETHU JV was appointed as a construction contractor for the installation of the internal electrical and ICT infrastructure at Phase 2 of the Tshwane Automotive Special Economic Zone (TASEZ) in Nellmapius, Pretoria. The contractor's scope of work includes installation of medium voltage and low voltage electrical cables, fibre cables, miniature substations, ring main unit (RMU), streetlighting as well as construction of 2 x indoor substations and installation of indoor 11kV switchgear, battery tripping units and a SCADA system. The project was executed under the FIDIC Red Book 2017 Second Edition contract regime.	R101 Million	Project Kickoff	Jun-26
ESKOM Holdings SOC (Camden Power Station) Winnie Masango Tel: 017 827 8152 Cell: 083 456 5910 Email: masangwb@eskom.co.za	The IAC & CCTV Upgrade Project for a Period of 12 Months at Camden Power Station - Installation of CCTV cameras at ESKOM's Camden Power Station in Mpumalanga. These cameras will be installed on the fence perimeter, new ash dam, water treatment plant, East and West CW pump house, Coal truck gate, 12 metre level Turbine floor (behind turbine), Zero metre level (Next to Roshcon Operator House) HVAC, New Ash dam offices, Coal plant including weighbridge, new AWR pumphouse, Reclamation dam, Coal stockyard dam and new AWR C&I Equipment Room and at the coal stockyard.	R 16,508,607.95	Project Kickoff	May-26
ESKOM Holdings SOC (Medupi Power Station) Sinethemba Galane Tel: 014 762 2241 Cell: 083 456 5910 Email: masangwb@eskom.co.za	The ELTEK-115 Solutions JV was appointed for the provision of maintenance services of all lighting, low voltage socket outlets and all hazardous location installation for Medupi Power Station for a period of 36 Months.	R 65,175,817.61	Project Kickoff	Apr-28
Ithala Isithebe Khamba Khumalo Tel: TBC Cell: 071 926 5059 Email: khambakhumalo1@gmail.com	Appointment of an electrical sub-contractor for the reconstruction of Isithebe Site 184 (Ithala Industrial) - ELTEK was appointed as a nominated subcontractor by the Lexy H World JV Kwemakholo Group for the electrical building services at the Isithebe industrial site which consists of 3 buildings (2 administrative buildings and 1 warehouse)	R 5,545,702.28	Construction	Sep-25
ESKOM Holdings SOC (Camden Power Station) Winnie Masango Tel: 017 827 8152 Cell: Email: masangwb@eskom.co.za	The IAC & CCTV Upgrade Project for a Period of 12 Months at Camden Power Station - Installation of CCTV cameras at ESKOM's Camden Power Station in Mpumalanga. These cameras will be installed on the fence perimeter, new ash dam, water treatment plant, East and West CW pump house, Coal truck gate, 12 metre level Turbine floor (behind turbine), Zero metre level (Next to Roshcon Operator House) HVAC, New Ash dam offices, Coal plant including weighbridge, new AWR pumphouse, Reclamation dam, Coal stockyard dam and new AWR C&I Equipment Room and at the coal stockyard.	R 16,508,607.95	Project Kickoff	May-26
Department of Minerals and Energy (DMRE) Lucky Matsime Tel: 012 406 7742 Cell: 072 772 4138 Email: Lucky.Matsime@dmre.gov.za	DMRE/002/2023/24: Supply, Installation, and Maintenance of 1400 Non - Grid Solar Home Systems For The Period of Six (6) Months By The Department Of Mineral Resources And Energy in the Steve Tshwete Municipality.	R 48,090,630.00	Stage 5 - Construction	Feb-27
AMG International Arie Hollenbach Tel: 011 615 4545 Cell: 082-490-1580 Email: arie@amggroup.co.za	Mukulu Mine 22kV Line Relocation - Turnkey design and construction services for relocation of a 3km x 11kV overhead ESKOM power line in Hotazel, Northern Cape province to make way for a new manganese mine	R 4,000,000.00	Stage 5 - Construction	On hold
Sol Plaatje Local Municipality Andrew Khoza Tel: 053 830 6646 Cell: 062 866 1739 Email: akhoza@solplaatje.org.za	Refurbishment of the Carters Glen Substation in Kimberley, Northern Cape The project scope includes the addition of a 66/11kV, 20MVA transformer at the substation, relocation of 2 x 11kV overhead feeder lines extending from the substation and completion of a protection coordination study for the municipality's 66kV electricity network. ELTEK is responsible for both the design and construction of the project.	R 19,000,000.00	Stage 5 - Construction	On hold

CONTACT US



ELTEK
ENGINEERING SERVICES

SYSTEMS | INNOVATION | TECHNOLOGY

Tel: 010 055 3694

Cell: 072 489 4142

FAX: 086 674 8361

E-mail: info@eltekeng.co.za

Physical Address:

Suite G1E, Riverview Office Park
1 River Road, Halfway House
Midrand, 1685

Postal Address:

P.O. Box 6632, Halfway House, 1685

